



JenLas[®] *fiber cw 200–1000* High Power cw Fiber Lasers



Advantages:

- Compact 19" unit OEM-design
- cw or modulated up to 100 kHz
- Highly reliable components
- Perfect beam quality

Customer benefits:

- Easy integration
- Multifunctional applications
- Low cost of ownership
- Perfect application quality

Applications:

- Cutting
- Welding
- Drilling
- Sintering

JenLas® fiber cw 200–1000

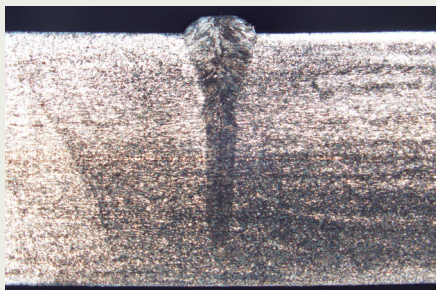
High Power cw Fiber Lasers

Specifications

General Properties	JenLas® fiber cw 200	JenLas® fiber cw 250	JenLas® fiber cw 400	JenLas® fiber cw 500	JenLas® fiber cw 500 MM	JenLas® fiber cw 1000	JenLas® fiber cw 1000 MM
Output power	200W	250W	400W	500W	500W	1,000W	1,000W
Wavelength	1,070nm						
Operation mode	cw or modulated						
Pulse repetition rate	0–100 kHz			0–10 kHz			
Min. pulse width	10 μs			50 μs			
Power stability	<1%*			<2%			
Beam Delivery							
Fiber connector	QCS			LLK-Q			
Fiber length	6m			10m			
Beam propagation	collimated			divergent			
Beam quality M ²	<1.1			<1.1	6.5	<1.1	6.5
Beam diameter	5mm			11.5 μm	50 μm	11.5 μm	50 μm
Beam divergence	<0.2mrad			40mrad	90mrad	40mrad	90mrad
Polarization	random						
Operating Conditions							
Ambient temperature	5–40°C						
Ambient relative humidity	5–85% (non-condensing)						
Cooling	Forced Air			Water (20–30°C)			
Flowrate	5l/min@8bar			8l/min@8bar		10l/min@6bar	
Electrical Properties							
Operating voltage	200–240V AC (50/60Hz)					400V AC (50/60Hz**)	
Operating current	1-phase, <16A					3-phase, <20A/phase**	
Mechanical Properties							
Dimensions (W x H x L)	19" x 5 RU x 507 mm					19" x 6 RU x 844 mm	
Weight	<48kg					<60kg	

* closed loop | **also available in 200V AC, 3 Phase (< 32 A/Phase)

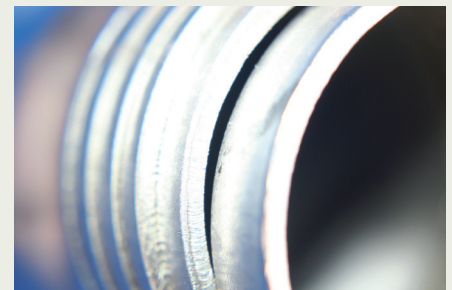
Application Examples



Blind welds in steel with >4.5 mm thickness



Cutting of thin metal sheets



Cutting of 1.6 mm thick exhaust pipes

It is our policy to constantly improve the design and specifications. Accordingly, the details represented herein cannot be regarded as final and binding.



JENOPTIK | Healthcare & Industry

JENOPTIK Laser GmbH

Goeschwitzer Strasse 29 | 07745 Jena | Germany

Phone: +49 3641 65-3053 | Fax: +49 3641 65-4011

E-mail: laser.sales@jenoptik.com | www.jenoptik.com

