

moglabs

Laser Diode Driver

LDD605



Revision 1.02

Limitation of Liability

MOG Laboratories Pty Ltd (MOGLabs) does not assume any liability arising out of the use of the information contained within this manual. This document may contain or reference information and products protected by copyrights or patents and does not convey any license under the patent rights of MOGLabs, nor the rights of others. MOGLabs will not be liable for any defect in hardware or software or loss or inadequacy of data of any kind, or for any direct, indirect, incidental, or consequential damages in connections with or arising out of the performance or use of any of its products. The foregoing limitation of liability shall be equally applicable to any service provided by MOGLabs.

Copyright

Copyright © MOG Laboratories Pty Ltd (MOGLabs) 2016. No part of this publication may be reproduced, stored in a retrieval system, or transmitted, in any form or by any means, electronic, mechanical, photocopying or otherwise, without the prior written permission of MOGLabs.

Contact

For further information, please contact:

MOG Laboratories P/L
49 University St
Carlton VIC 3053
AUSTRALIA
+61 3 9939 0677
info@moglabs.com

MOGLabs USA LLC
419 14th St
Huntingdon PA 16652
USA
+1 814 251 4363
info@moglabsusa.com

MOGLabs Europe
Goethepark 9
10627 Berlin
GERMANY
+49 30 21 960 959
info@moglabs.eu

Preface

The MOGLabs LDD Laser Diode Driver is a compact high-power laser diode driver. It provides up to 6 A at 5 V diode injection current with very low noise, and a temperature controller and 60 W Peltier TEC driver. It can be operated via front-panel controls, or using a computer communications interface (TCP/IP or USB) with simple text-based commands. It has been designed for tapered amplifier and broad area laser diodes commonly used in atomic physics research laboratories, where stability and low noise are essential.

We hope that you enjoy using the LDD as much as we do. Please let us know if you have any suggestions for improvement in the LDD or in this document, so that we can make life in the laser lab easier for all, and check our website from time to time for updated information.

MOGLabs www.moglabs.com

Safety Precautions

Safe and effective use of this product is very important. Please read the following safety information before attempting to operate your laser. Also please note several specific and unusual cautionary notes before using the MOGLabs LDD, in addition to the safety precautions that are standard for any electronic equipment or for laser-related instrumentation.

CAUTION – USE OF CONTROLS OR ADJUSTMENTS OR PERFORMANCE OF PROCEDURES OTHER THAN THOSE SPECIFIED HEREIN MAY RESULT IN HAZARDOUS RADIATION EXPOSURE

Laser output can be dangerous. Please ensure that you implement the appropriate hazard minimisations for your environment, such as laser safety goggles, beam blocks, and door interlocks. MOGLabs takes no responsibility for safe configuration and use of your laser. Please:

- Avoid direct exposure to the beam.
- Avoid looking directly into the beam.
- Note the safety labels and heed their warnings.
- When the laser is switched on, there will be a short delay of two seconds before the emission of laser radiation, mandated by European laser safety regulations (IEC 60825-1).
- The STANDBY/RUN keyswitch must be turned to RUN before the laser can be switched on. The laser will not operate if the keyswitch is in the STANDBY position. The key cannot be

removed from the controller when it is in the clockwise (RUN) position.

- To completely shut off power to the unit, turn the keyswitch anti-clockwise (STANDBY position), switch the mains power switch at rear of unit to OFF, and unplug the unit.
- When the STANDBY/RUN keyswitch is on STANDBY, there cannot be power to the laser diode, but power can still be supplied to the laser head for temperature control.

CAUTION Please ensure that the unit is configured for the correct voltage for your AC mains supply before connecting. The supply must include a good ground connection.

CAUTION To ensure correct cooling airflow, the unit should not be operated with cover removed.

WARNING The internal circuit boards and many of the mounted components are at high voltage, with exposed conductors, in particular mains supply to various sections of the power supply. The unit should not be operated with cover removed.

NOTE The MOGLabs LDD is designed for use in scientific research laboratories. It should not be used for consumer or medical applications.

Protection Features

The MOGLabs LDD includes a number of features to protect you and your laser.

- Softstart** A time delay (3 s) followed by linearly ramping the diode current (3 s max).
- Circuit shutdown** Many areas of the circuitry are powered down when not in use. The diode current supplies, and others may be without power when the unit is in standby mode, if an interlock is open, or a fault condition is detected.
- Current limit** Sets a maximum possible diode injection current.
- Cable continuity** If the laser is disconnected, the system will switch to standby and disable all laser supplies. If the laser diode, TEC or temperature sensor fail and become open-circuit, they will be disabled accordingly.
- Short circuit** If the laser diode, TEC or temperature sensor fail and become short-circuit, they will be disabled accordingly.
- Temperature** If the detected temperature is outside normal operating temperature, the temperature controller is disabled.
- Internal supplies** If one of the internal DC power supplies (+3.3, +5, ± 12 V) is 1 V or more below its nominal value, the respective components are disabled.
- Protection relay** When the power is off, or if the laser is off, the laser diode is shorted via a normally-closed solid-state relay at the laser head board.

Emission indicator The MOGLabs controller will illuminate the current warning indicator LED immediately when the laser is switched on. There will then be a delay of at least 3 seconds before actual laser emission.

Mains filter Protection against mains voltage supply transient peaks.

Key-operated The laser cannot be powered unless the key-operated STANDBY switch is in the RUN position, to enable protection against unauthorised or accidental use. The key cannot be removed from the controller when it is in the clockwise (RUN) position.

Interlocks The main unit has an external interlock to allow the laser to be disabled via a remote switch.

Contents

Preface	i
Safety Precautions	iii
Protection Features	v
1 Introduction	1
2 Connections and controls	3
2.1 Front panel controls	3
2.2 Front panel display	4
2.3 Rear panel connections	5
2.4 Internal switches	6
2.5 Digital control	6
3 Operation	7
4 MOGLDD application	9
4.1 Device discovery	9
4.2 Main display	10
4.3 Menu	11
5 Specifications	17
6 Troubleshooting	19
6.1 CURRENT indicator	19
6.2 TEMP indicator	19
6.3 STATUS indicator	20
6.4 REMOTE indicator	20
6.5 FAULT indicator	20
6.6 POWER indicator	20

6.7	Error codes	21
7	Laser head board	23
7.1	B1048 headboard	23
8	Connector pinouts	25
8.1	Temperature	25
8.2	Current	26
9	Command language	27
9.1	Arguments	27
9.2	General functions	28
9.3	Basic control	28
9.4	Temperature control setting	29
9.5	Current control setting	30
9.6	Configuration settings	31
10	Communications	33
10.1	Protocol	33
10.2	TCP/IP	34
10.3	USB	35

1. Introduction

The MOGLabs LDD is a compact high-power laser diode driver, providing low-noise injection current for the diode, and a temperature controller with Peltier TEC output.

All connections are via a dual cable arrangement from the LDD to the laser diode, typically in a MOGLabs amplifier or high-power cateye laser. One cable provides the interface for the TEC and temperature sensor, the other for the laser diode. For use with non-MOGLabs laser products, please see chapter 7 for information on connecting the diode, thermoelectric Peltier cooler (TEC), and temperature sensor.

The front-panel controls and display (see figure 1.1) can be used to monitor and set the diode current, current limit, diode voltage, temperature, temperature setpoint, temperature limits, TEC current and TEC voltage.

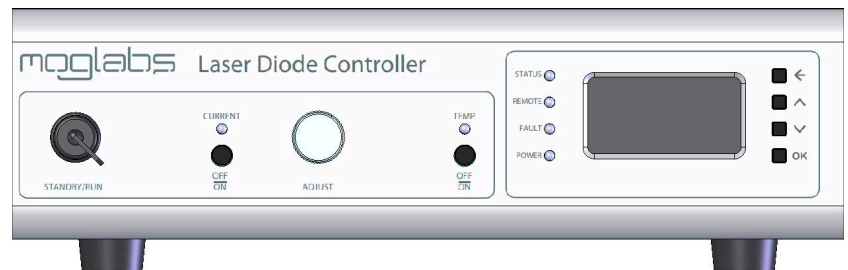
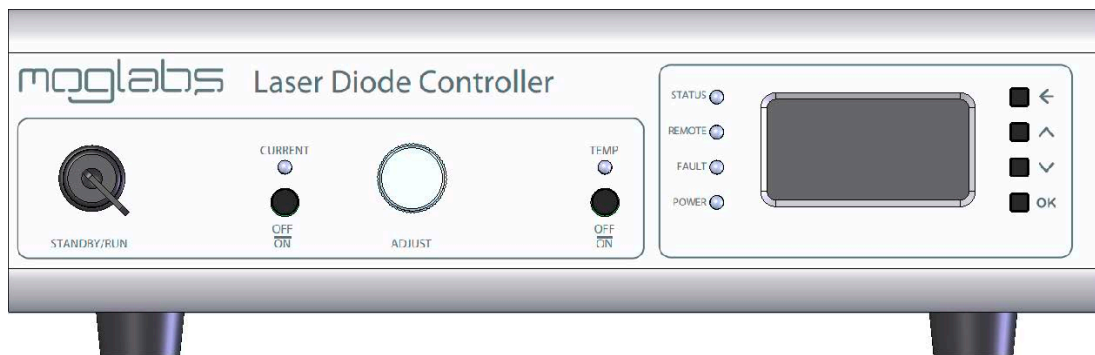


Figure 1.1: MOGLabs LDD front panel layout.

2. Connections and controls

2.1 Front panel controls



STANDBY/RUN

In STANDBY mode, the temperature controller is active, but the diode current is disabled.

In RUN mode, the laser current driver is active. The diode current is disabled until the laser enable switch is ON.

On first power-up and during the boot procedure the LDD will halt if the key is in the RUN position. This ensures the laser cannot be accidentally turned back ON if there is a power failure. The unit should be set to STANDBY and back to RUN to initiate user control. Place the unit back into STANDBY if further operation is not desired.

CURRENT OFF/ON

Diode current enable. The STANDBY/RUN key switch must first be in the RUN position. The temperature controller must also be on and operating.

If the unit fails to switch to RUN mode (current indicator does not show yellow or green), see appendix 6.

ADJUST

The ADJUST rotary encoder allows variation of any editable value on the LCD display. The encoder can be pressed to rotate through

different digits of the value being edited, to allow for fine and coarse control.

TEMP OFF/ON

Temperature control enable. If the unit fails to switch the temperature controller on (current indicator does not show green), see appendix 6.

←, ↑, ↓, OK

Menu control buttons. These are used to navigate the menu system allowing users to go back one menu level (←), up and down between lines on any given menu (↑ or ↓) and to move forward in the menu system or to run system functions (OK).

2.2 Front panel display

The lcd display provides status and control information in the following pages:

Main	Critical values and settings
Menu	Main menu structure
TEC	Temperature-related values and settings
Laser	Laser values and settings
Ethernet	Ethernet (TCP/IP) configuration
Advanced	Debug information
About	Model and serial numbers

2.3 Rear panel connections



IEC power in The unit should be pre-set for the appropriate voltage for your country. Please contact MOGLabs for instructions if you need to change the power supply voltage.

Warning: The LDD uses an analogue power supply to achieve low noise. It does not automatically select the correct mains voltage. The mains voltage must be internally set to 120 or 240 V as required.

Fan	The fan speed is temperature-controlled.
Interlock	The LDD will not power on the laser unless the pins on this port is shorted. A standard 3.5 mm audio plug is provided.
MOD	BNC connector. Control input for analogue diode current modulation. ± 10 V input max, 10 mA/V sensitivity (modulation depth of 100mA) and bandwidth of 40 kHz.
LASER DIODE	Female DE15 port to laser head. Provides diode current, I ² C, 5 V and other control lines to the laser headboard.
TEMPERATURE	Female DE9 port to laser head. TEC current and temperature sensor.
Ethernet	RJ45 10/100 twisted pair ethernet port.
USB	USB-A hi-speed (USB2) port.

2.4 Internal switches

CAUTION

The cover should only be removed when the power switch is in the OFF position and the power cable has been removed!

Compliance voltage

Switch 2 (SW2) located near the switch-mode power supply enables adjustment of the maximum compliance voltage to -5.6 V , -6.7 V or -7.8 V . The lowest value that ensures adequate compliance potential at the diode is recommended, to reduce internally dissipated power. Note that these settings represent the voltage at the power supply and significant potential can be lost along the cable to the laser head, when operating at high current.

115v/230v

Switch 3 (SW3) located in the front right corner of the main board is used to select the operating voltage of the low noise analogue voltage supply. This switch should NEVER be toggled while power is connected to the device! Selecting the wrong voltage may seriously damage the device!

2.5 Digital control

Located on the rear of the unit are both USB and ethernet ports to allow remote control via simple text commands. The USB connection appears on a computer as a COM port. Commands can be sent via ethernet using a simple telnet protocol. For a list of commands please refer to the command syntax, chapter 9.

3. Operation

The MOGLabs LDD should be connected to the laser diode and TEC using heavy gauge screened cables, one for each of the current and temperature functions.

To operate the LDD:

1. Ensure the rear power switch is on, and the STANDBY/RUN switch is in the STANDBY position. In this mode, the current controller is disabled. The TEMP LED should glow yellow indicating that the temperature controller is in standby waiting to be initialized. To start the temperature controller press the ON/OFF button below the TEMP LED. The LED should turn green indicating that the temperature controller is running.
2. Switch from STANDBY to RUN. The CURRENT LED should turn yellow indicating that the current supply can now be enabled. If the indicator is still off, this indicates that the temperature loop has not been enabled or that the interlock is not connected.
3. If the controller is switched back to STANDBY, the laser current will terminate but the temperature controller will continue to operate.
4. Turning off the temperature controller also disables the current controller. This can be done by pressing the TEMP ON/OFF button.
5. To adjust the temperature setpoint: using the buttons to the right of the display, move the cursor down to T_{set} and then use the rotatory encode (ADJUST) to vary the value. Push the rotary encoder knob to select the active digit for coarse or fine control.
6. Adjust the current setpoint and current limit by selecting I_{set} and I_{lim} . The diode current can never be set above the current

limit and the current limit can never be set below the diode current setpoint.

7. Switch the laser on. Press the CURRENT ON/OFF button will now enable the current supply. The LED below CURRENT will briefly turn blue indicating that the current supply is starting and after 3 seconds will ramp up to the setpoint. Once the current has hit the setpoint the LED will turn green.

Note that the temperature controller must be running, all interlocks enabled and no errors present for the laser current to be enabled.

4. MOGLDD application

The host software `mog1dd` provides a graphical user interface that allows remote control of the LDD laser diode driver.

4.1 Device discovery

By default, a device discoverer (Figure 4.1) is initiated when `mog1dd` is started. The discoverer broadcasts a UDP discovery packet on ethernet, and scans the USB ports of the host computer, looking for an LDD device. Starting the application is then as simple as selecting the device to communicate with and clicking *Connect*.

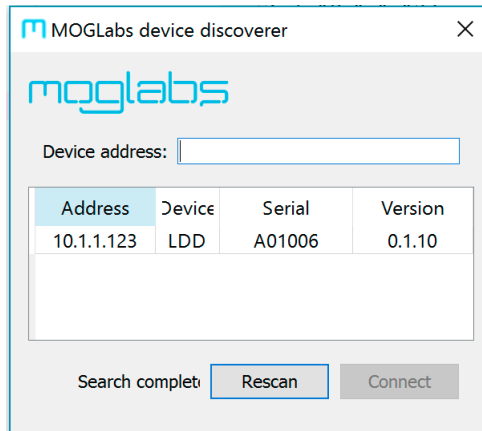
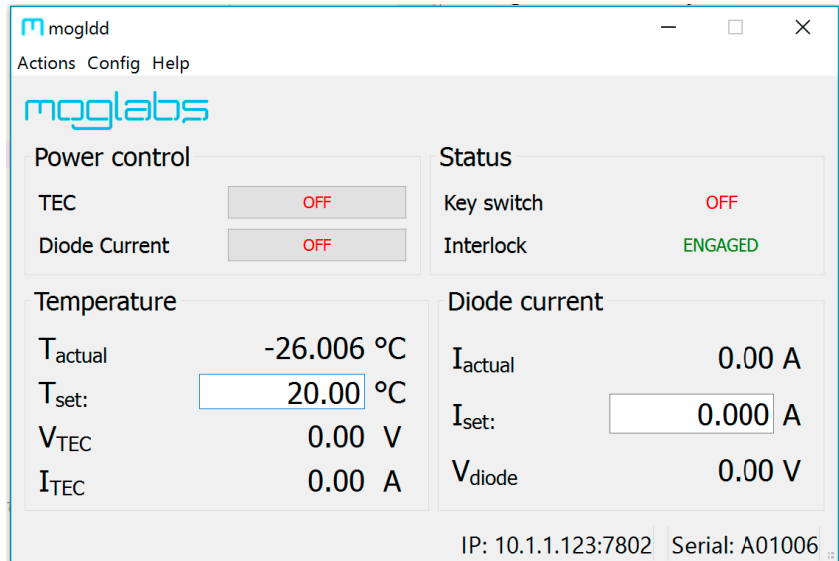


Figure 4.1: Example of the *device discoverer* window.

If the network does not permit device discovery and/or your LDD does not appear in the list, it is possible to enter the IP address of the unit in the *Device address* box and connect regardless.



4.2 Main display

Power control Two buttons allow control of the TEC and laser diode current and show their status.

TEC Activates the TEC output and temperature feedback control.

Diode current Activates the laser diode output with soft start: the current increases slowly after a short delay.

Status The front panel keyswitch and rear panel interlock status are displayed.

Temperature The measured temperature of the laser, and the current and voltage of the TEC, are displayed and updated periodically.

T_{actual} Measured temperature determined from the temperature sensor (thermistor or AD590).

T_{set} Displays the temperature setpoint value. The value can be edited to change the temperature setpoint. The device value is updated on

Enter or TAB.

I_{TEC} Measured current through TEC.

V_{TEC} Measured voltage across TEC.

Diode current

I_{actual} Measured current through laser diode.

I_{set} Displays the current setpoint value. The value can be edited to change the current setpoint. The device value is updated on Enter or TAB.

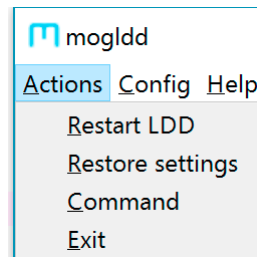
V_{diode} Measured voltage across laser diode.

Status bar

The status bar shows the device serial number, and the communications channel: IP address and port (if using ethernet) or USB port.

4.3 Menu

4.3.1 Action



Restart LDD

Resets the LDD device. Communications will be suspended. moglDd will attempt to reconnect to the device for up to 10 seconds.

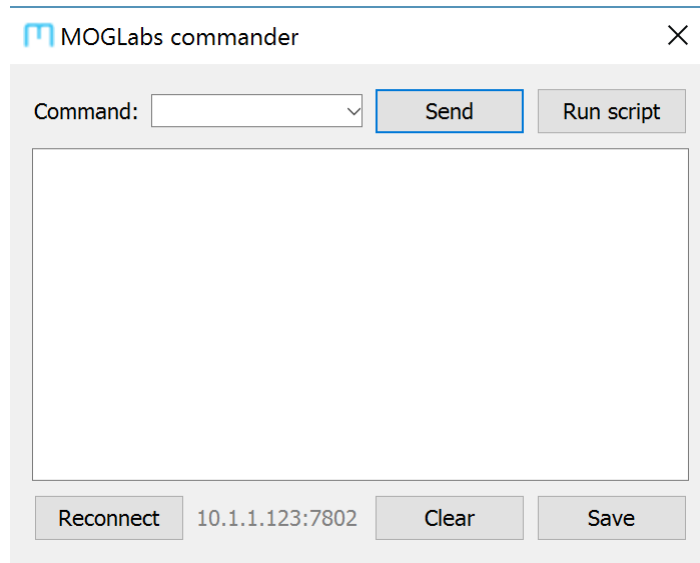
Restore settings

Initiates restore of factory settings from EEPROM on the LDD device.

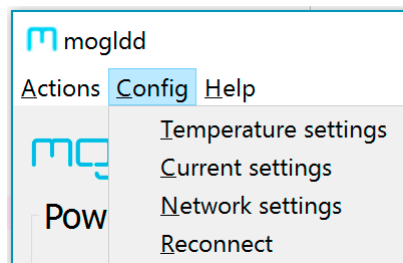
Command

This opens a new dialogue for interactive command access to the device, similar to `telnet` but this approach will work via USB. Type a

command into the command line window, and hit **Enter** to send that command to the device (see appendix 9); the response will appear in the box below the command line window.



4.3.2 Config



Temperature settings The temperature settings dialogue allows setting critical temperature controller parameters.

T set An alternative control for setting the desired temperature.

Temperature settings ? X

T set: 20.00 °C

Minimum temperature: 0.0 °C

Maximum temperature: 35.0 °C

Maximum current: 2.5 A

PID manual set:

P: 80 Set

I: 3 Set

D: 2 Set

Invert current to TEC: Inverted

Exit

Minimum/Maximum temperature, Maximum current Define the limits to allowed set-point temperature and the maximum TEC current.

PID coefficients The LDD implements the feedback control via a standard PID (proportional integral differential) function:

$$u(t) = k_p e(t) + k_i \int_0^t e(\tau) d\tau + k_d \frac{de}{dt}$$

$e(t)$ is the input error signal and $u(t)$ is the feedback response. k_p , k_i , k_d are scaled positive proportional (P), integral (I) and differential (D) gain coefficients. Typical values are $P = 80$, $I = 3$ and $D = 2$. New coefficients can be entered but are not activated until the adjacent Set button is pressed.

Inverted current to TEC Allows application of the LDD with a reverse polarity TEC.

Current settings

I set:	0.000	A
I limit:	0.50	A
Maximum diode voltage:	5.0	V
Photodiode override:	<input checked="" type="checkbox"/> Engaged	
Current modulation:	<input type="checkbox"/> Engaged	

Exit

I set An alternative control for setting the desired laser diode current.

I limit Sets upper limit for the entered diode current on the LDD device.

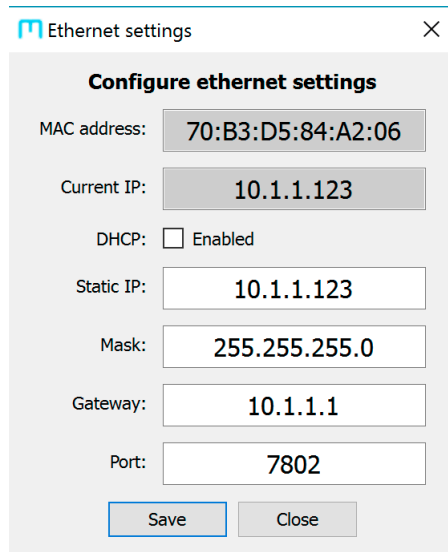
Maximum diode voltage Sets upper limit on the diode voltage on the LDD device.

Current modulation Enables external analogue modulation of the laser diode current via the rear panel modulation input.

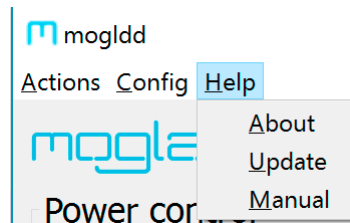
Network settings Allows configuration of network connection settings (IP address, mask, gateway and port). Particularly useful for configuring the network settings over USB. Note that changing the *Static IP* only has an effect if DHCP is disabled, or if DHCP name resolution fails.

Note that changing the ethernet settings will require the application to be restarted, and may also require the device to be rebooted. The port should be unchanged at 7802 to ensure that the *mogldd* suite of programs can continue to communicate with the device.

Reconnect Initiates attempt to reconnect to device if communication is broken.



4.3.3 Help



About Displays device information.

Update Initiates firmware update from binary file.

Manual Opens web browser at the MOGLabs support website.

5. Specifications

Parameter	Specification
Current regulator	
Output current	0 to 6 A
Max diode voltage	5 V at full current
Display resolution	± 1 mA
Noise	TBD (10 Hz – 1 MHz)
Stability	Warmup time: 15 minutes
Analogue mod	10 mA/V, ± 10 V max, 40 kHz bandwidth

Temperature controller	
TEC current max	± 5 A
TEC voltage max	± 12 V
TEC power max	60 W
Stability	± 10 mK/ $^{\circ}$ C
Sensor	NTC 10 k Ω
Range	-20 to $+80^{\circ}$ C standard
Display resolution	$\pm 0.01^{\circ}$

Note

The TEC is controlled with a linear regulator, which may overheat if the current load is high and the TEC voltage is low. Choose a TEC with resistance of 2 to 3 ohms to optimise power to the device.

Parameter	Specification
Computer interface	
Ethernet	10/100 TP, RJ45
USB	USB2, plug type USB-A
Display type	2.4" 128 x 64 LCD display

Connectors	
Current	DE15 high density 15 pin female
Temperature	DE9 9 pin female

Protection	
External interlock	3.5 mm mono audio plug (provided)
Key interlock	STANDBY/RUN
Delayed soft-start	3 s delay + 3 s ramp (to 6A)
Open circuit	Laser cable, TEC, temperature sensor
Diode current	Digital setpoint limit I_{lim}

Mechanical & power	
Fan	Dual 24 V DC ball-bearing Temperature controlled
IEC input	95 to 130 V 60Hz or 220 to 260 V 50Hz Replaceable fuse: radial can, anti-surge (slo-blo), 250V/200mA
Dimensions	WxHxD = 250 × 79 × 292 mm
Weight	2.4 kg (excluding cables, laser head board)
Power	18 W (standby) 30 W to 80 W (low/high diode/TEC load)

6. Troubleshooting

The MOGLabs LDD detects a wide range of fault conditions and de-activates related circuitry accordingly. The front-panel LEDs provide indication of the state of these functions.

6.1 CURRENT indicator

Colour	Status
DARK	Current controller off and blocked
RED	Current error
YELLOW	Current OFF - current standby mode Current ready to be enabled
BLUE	Current ramping up to setpoint
GREEN	Current at setpoint

6.2 TEMP indicator

Colour	Status
RED	Temperature controller error
YELLOW	Temperature controller OFF Temperature standby mode Temperature controller ready to be enabled
GREEN	Temperature control operating

6.3 STATUS indicator

Colour	Status
RED	The device is booting
YELLOW	Toggle key switch to continue
GREEN	The device has booted successfully

6.4 REMOTE indicator

Colour	Status
DARK	Remote mode is currently OFF
BLUE	Remote mode is currently ON

6.5 FAULT indicator

Colour	Status
DARK	No faults detected
RED	Error detected
YELLOW	Interlock open circuit

6.6 POWER indicator

Colour	Status
DARK	The device is switched off
RED	Power supply fault
GREEN	Power supplies normal

6.7 Error codes

If an error is detected, the LCD display will provide an explanatory message from the table below.

Error Message	Solution
TEC Temp too low	The temperature has fallen below the temperature minimum setpoint. This may indicate an issue with the polarity of the TEC.
TEC Temp too high	The temperature has risen above the temperature maximum setpoint. This may indicate an issue with the polarity of the TEC, or a failure of the TEC.
Laser over voltage	The voltage supplied to the laser diode has exceeded the voltage maximum setpoint.
No interlock	The interlock is open circuit. Make sure the interlock is connected and shorted.
PD error	The photodiode threshold has not been met. Disable this feature by enabling PD override in the TEC menu.
Laser open circuit	The laser diode is open circuit. Make sure the laser cable is connected correctly.
Laser short circuit	The laser diode is short circuit. Check laser cable and diode.
Toggle key to continue	The key needs to be turned off and on again before operation.

Error Message	Solution
IO error	Internal error, check power supplies and internal ribbon cables.
ADC error	Internal error, check power supplies and internal ribbon cables.
DAC error	Internal error, check power supplies and internal ribbon cables.
Turn off TEC first	The temperature controller must be turned off before you can complete that operation.
DHCP Failed	Ethernet DHCP failed, disconnect and reconnect Ethernet cable.

For additional support please contact your local MOGLabs distributor.

7. Laser head board

A laser head interface board is available. The headboard allows convenient connection breakout to the laser diode, TEC, temperature sensor, and laser head interlock. It also includes a protection relay a passive protection filter and a laser-on LED indicator.

The default headboard provided with LDD controllers purchased with a laser is the B1048, which includes connections capable of 6A of diode current and 5A of TEC current.

Currently there is provision for a photodiode which can be used to verify proper laser diode output, so that the current supply can be reduced if the output is below expectations. Contact MOGLabs for further information.

7.1 B1048 headboard

The B1048 is a small circuit board that provides connection to a passive NTC thermistor temperature sensor, TEC, diode and photodiode, using Hirose DF59 “swing-lock” wire-to-board connectors.

Name	Description
P1	TEC current input
P6	Diode current input
PD	Photodiode connection
Therm	Thermistor input
Pelt1	Peltier connection 1 TEC
Pelt2	Peltier connection 2 TEC
Las A	Laser anode
Las K	Laser cathode

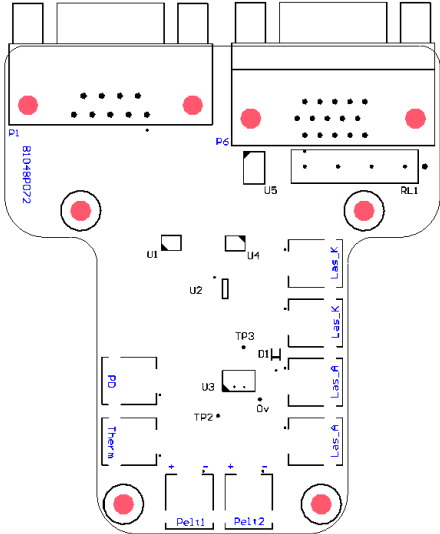


Figure 7.1: B1048 laser head board.

8. Connector pinouts

WARNING: The CURRENT and TEMP connectors should only be connected to a MOGLabs laser head board. They supply high-current signals that may damage other devices. Considerable care should be taken to ensure that non-MOGLabs devices are not connected via these connectors.

Only high quality cables with 24 AWG or larger conductors should be used.

8.1 Temperature

Pin	Signal
1	Thermistor +
2	GND
3	TEC -
4	TEC +
5	TEC +
6	Thermistor -
7	TEC -
8	TEC -
9	TEC +

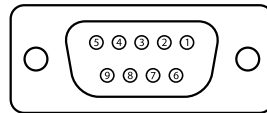


Figure 8.1: Female DE9 TEMP connector on rear panel.

8.2 Current

Pin	Signal
1	Relay -
2	I2C SDA
3	Photodiode status
4	Diode cathode
5	Diode anode
6	GND
7	GND
8	GND
9	N/C
10	Diode anode
11	5v
12	I2C SCL
13	Diode cathode
14	Diode cathode
15	Diode anode

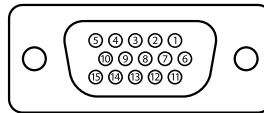


Figure 8.2: Female DE15 CURRENT connector on rear panel.

9. Command language

The protocol for communicating with an LDD is described in chapter 10. Host software to interface with the unit is in development. The protocol follows a request/reply architecture: after sending a command, it is important to always wait for the response before sending the next command.

Please note: The command language is being continuously updated across firmware releases to improve functionality and add features. When upgrading firmware, please refer to the most recent version of the manual available at <http://www.moglabs.com>.

9.1 Arguments

Most commands accept a comma-separated list of parameters. Parameters shown in square brackets are optional, and most commands are treated as queries when called without a value.

All commands respond with a string that begins with either “OK” or “ERR” to indicate whether it was successful. It is strongly recommended that the response be checked for success.

The units used are as follows:

Temperature Degrees Celsius

Voltage Volts

Current Amperes

Most commands will return a message that includes the *actual* value, which may differ from the *requested* value due to parameter limits and will start with the “ERR” prefix.

9.2 General functions

- BOARDTEMP** Report measured board temperature.
- CLEARERROR** Clear errors remotely.
- ETHINFO** Report Ethernet settings.
- FACTORYRST** Restore EEPROM configuration from factory defaults. Note that this irreversibly overrides all user settings.
- HELP, ?** List available commands.
- INFO** Report information about the unit.
- INTERLOCK** Report interlock status.
- RESET, RESTART** Initiate microcontroller reset, causing unit to reboot. Note that all communication links will be immediately closed.
- STATUS** Report errors currently shown on the display.
- TOGOVERRIDE** Removes the need to toggle the key switch on boot.
- UPDATE** Initiate microcontroller update mode, causing unit to reboot. Note that all communication links will be immediately closed.
- VERSION** Report versions of firmware currently running on device. Please include this information in any correspondence with MOGLabs.
- VMON** Report diagnostic monitoring information about power supplies.

9.3 Basic control

- TEC** `TEC[,onoff]`
Control temperature controller. `onoff` can be ON or OFF; reports temperature controller status if parameter absent.
- CURRENT** `CURRENT[,onoff]`
Control current controller. `onoff` can be ON or OFF; reports status of the current controller if parameter absent.

REMOTE `REMOTE[,onoff]`

Remote control lockout. `onoff` can be ON or OFF; reports remote lockout status if parameter absent.

9.4 Temperature control setting

INVERT `INVERT[,value]`

Invert current to TEC. `value` can be 0 or 1; reports status of current inversion if parameter absent.

ITEC `ITEC`

Reports TEC current.

PID `PID,{P, I, D}[,value]`

Set one of P, I or D constants or report their current value if no value specified. `value` will be rounded to the nearest whole number.

TCURRENT `TCURRENT[,value]`

Set the maximum TEC current or reports TEC current if no value specified. `value` will be rounded to one decimal place.

TEMP `TEMP`

Reports laser temperature.

TMAX `TMAX[,value]`

Set the temperature maximum or reports the current maximum if no value specified. `value` will be rounded to the nearest whole number.

TMIN `TMIN[,value]`

Set the temperature minimum or reports the current minimum if no value specified. `value` will be rounded to the nearest whole number.

TSET `TSET[,value]`

Set the temperature setpoint or report current setpoint if no value specified. `value` will be rounded to two decimal places.

VTEC `VTEC`

Reports TEC voltage.

9.5 Current control setting

ILD **ILD**
Reports laser diode current.

ILIM **ILIM[,value]**
Set or query the current limit. **value** will be rounded to two decimal places.

ISET **ISET[,value]**
Set or query the current setpoint. **value** will be rounded to three decimal places.

MODULATION **MODULATION[,value]**
Set or query current modulation. **value** can be 0 or 1.

PDOVERRIDE **PDOVERRIDE[,value]**
Set or query photodiode override. **value** can be 0 or 1.

VLD **VLD**
Reports laser diode voltage.

VMAX **VMAX[,value]**
Set or query the maximum laser voltage. **value** will be rounded to two decimal places.

9.6 Configuration settings

SET, GET Set and report EEPROM configuration values. Each **set** command described below has a corresponding **get** command to report the relevant parameter.

ipaddr **SET, ipaddr, "xxx.xxx.xxx.xxx"**
Set IP address based on decimal dotted-quad string (for example "10.1.1.180").

ipmask **SET, ipmask, "xxx.xxx.xxx.xxx"**
Set IP mask based on dotted-quad string (for example "255.255.255.0").

ipgw **SET, ipgw, "xxx.xxx.xxx.xxx"**
Set IP gateway based on dotted-quad string (for example "10.1.1.1").

ipport **SET, ipport, port**
Set the TCP/IP port number for device communication.

dhcp **SET, dhcp, onoff**
Enable or disable DHCP.

10. Communications

The LDD can be connected to a computer by USB or ethernet (TCP/IP). A host appmog1dd is in development, to provide interactive access to most of the features, or communications can be integrated into existing control software. Examples of controlling the LDD in several languages are also in development.

10.1 Protocol

Communication follows a query/response protocol, where the user sends an ASCII string to the unit, and the unit sends an ASCII response to the originating source. The list of possible commands is detailed in chapter chapter 9.

Messages must be CRLF-terminated. This means that all statements sent to the unit must end with the carriage return ('\r' = ASCII code 0x0D) followed by a new-line character ('\n' = ASCII code 0x0A). Most terminal applications and drivers provide the ability to automatically append these characters.

Responses from the unit are also CRLF terminated, and responses should be buffered until CRLF is received because some responses span multiple lines. For most applications buffering may not be required, but for reliability buffering is recommended.

Statements are either **commands** or **queries**. A command is a statement that causes some action to occur, and the unit will respond with either "OK" or "ERR" depending on whether the command succeeded or not. For example,

```
> CURRENT,ON
< ERR: The TEC needs to be ON to turn the Current ON.
> TEC,ON
< OK: The TEC is now ON.
```

```
> CURRENT,ON  
< OK: The Current is now ON.
```

Note that the response typically describes the result of the request.

Queries are statements to return an internal value, and either return the value requested or a message beginning with “ERR”. For example,

```
> TEMP  
< ERR: Temperature sensor missing
```

```
> TEMP  
< 22.635 C
```

It is strongly recommended that all software should wait for this response, and check whether it indicates an error. The `python` and `LabVIEW` bindings provided by `MOGLabs` take care of buffering and error checking automatically.

10.2 TCP/IP

When ethernet is connected, the LDD will attempt to connect to the network using the setting in ethernet the menu. If DHCP is enabled the device will first try to obtain an IP address via DHCP. If DHCP fails, the static settings will then be used. In both cases, the current address will be shown. The TCP/IP port number is also displayed in this menu. This port can be connected to using a `telnet` application to execute commands, or the provided `mog1dd` software suite.

10.2.1 Changing IP address

If your network does not use a DHCP server, you may need to manually change the IP address. This is easily done via the front-panel menu system.

10.3 USB

The LDD can be directly connected to a host computer using a USB cable (type A-male). The device will appear as a Virtual COM port - a fast serial port that behaves like an RS232 connection.

The STM32 Virtual COM Port Driver device driver for the Windows™ operating system is available from the MOGLabs website. Connecting the LDD will install a new COM port on the machine, which can be connected to and communicated with.

To determine the port number of the device, go to Device Manager (Start, then type Device Manager into the Search box). You should see a list of devices including “Ports” (Figure 10.1).

The LDD can be identified as a COM port with the following name,

STMicroelectronics Virtual COM Port (COMxx)

where xx is a number (typically between 4 and 15). In the example

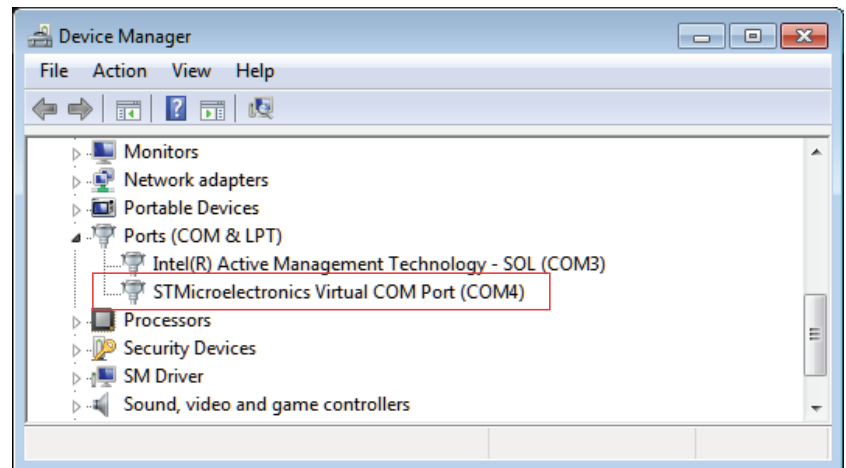


Figure 10.1: Screenshot of Device Manager, showing that the LDD can be communicated with using COM4. The port number might change when plugging into a different USB port, or after applying a firmware update.

image, the device was installed as COM4.

Note that if the port appears in Device Manager with a different name, then the driver was not successfully installed. If this occurs, disconnect the LDD from the host computer, reinstall the device driver, then reconnect the USB cable.

