

LCOS-SLM (Liquid Crystal on Silicon - Spatial Light Modulator)



X10468/X13267/X13138 series

**Control your light !
Shape your beam !
Improve your image !**

The X10468/X13267/X13138 series devices are a reflective type of pure phase Spatial Light Modulators (SLMs), based on Liquid Crystal on Silicon (LCOS) technology in which liquid crystal (LC) is controlled by a direct and accurate voltage, and can modulate a wavefront of light beam. The LCOS-SLMs are carefully designed to achieve high light utilization efficiency from various points of view, such as reflectivity, aperture ratio and diffraction noise due to the pixel structure.

The X10468/X13267/X13138 series can be controlled via a PC using the Digital Video Interface (DVI), which is a standard interface for PC displays. The distortions in the LCOS chip, such as wavefront distortion and non-linear response of the LC, are efficiently compensated by the controller.

Easy PC control, precise and linear phase modulation characteristics can be accomplished with the X10468/X13267/X13138 series. They can also provide high diffraction efficiency and high light utilization efficiency.

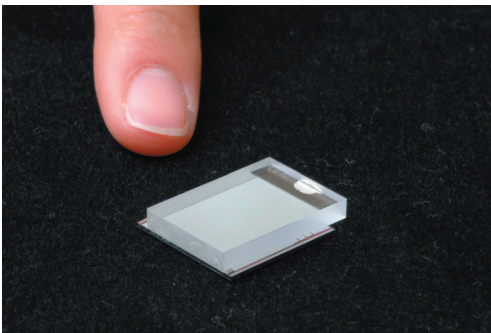
Features

- Pure, linear and precise phase control
- High light utilization efficiency
- High diffraction efficiency
- High power handling capability
- Ease of use (DVI compatible)
- Reflective type

Applications

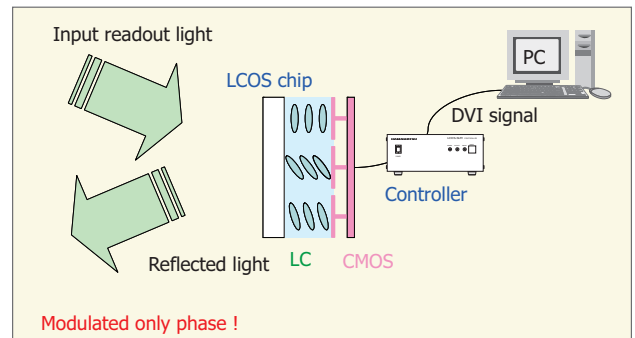
- Laser material processing
- Optical manipulation
- Wavefront correction
- Pulse shaping
- Optical testing

LCOS chip inside the head



Principle of modulation

The LCOS chip has a parallel-aligned nematic liquid crystal layer to modulate light. It only changes the phase of light without any change of intensity and rotation of polarization state. Phase modulation is changed according to the alignment of the LC. The LC alignment is controlled, pixel by pixel, using a CMOS backplane and a DVI signal via a PC.

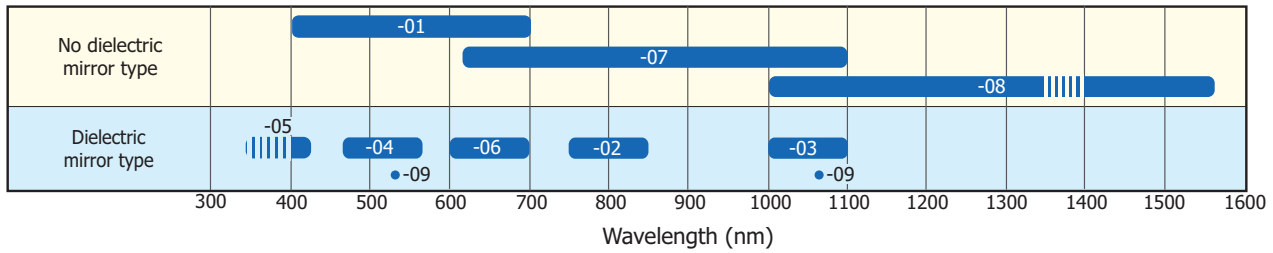


KACCC0638EA

Selection guide

There are nine standard types of the X10468/X13267/X13138 series available. The -01/-07/-08 types have no dielectric mirror but have higher diffraction efficiency and covers the wide wavelength range of the readout light spectrum. The -02/-03/-04/-05/-06/-09 types have a dielectric mirror for a specified wavelength range. Figure 1 shows the spectral response for these types. The ultra violet light will cause a damage at the wavelength range less than 400 nm for the -05 type. Please consult us the details. Hamamatsu produces OEM devices that meet your requirements in the wavelength range from 355 nm to 1550 nm. We are able to design and optimize device elements according to a light wavelength used in your application. For the wavelength band between 1350 and 1400 nm on the -08 type, the reflectance degrades about 5% due to the absorption by the glass substrate.

[Figure 1] Spectral response



KACCB0270ED

Absolute maximum ratings

Parameter	Operating temperature (°C)	Storage temperature (°C)
X10468 series	+10 to +40*1	-20 to +55*1
X13267 series		
X13138 series		

*1: No condensation. Humidity may cause deterioration of characteristics, so be careful with the humidity.

The characteristics of this product depend on temperature. Using this product at an ambient temperature of about 25 °C is recommended.

When there is a temperature difference between a product and the surrounding area in high humidity environment, dew condensation may occur on the product surface. Dew condensation on the product may cause deterioration in characteristics and reliability.

Note: Exceeding the absolute maximum ratings even momentarily may cause a drop in product quality. Always be sure to use the product within the absolute maximum ratings.

Structure

■ Head

Parameter	Number of pixels (pixels)	Pixel pitch (μm)	Effective area size (mm)	Fill factor (%)	Weight (g)
X10468 series	792 × 600	20	15.8 × 12	98	350
X13267 series	792 × 600	12.5	9.9 × 7.5	96	
X13138 series	1272 × 1024		15.9 × 12.8		

■ Controller

Parameter	Supply voltage AC (V)	Power supply frequency (Hz)	Weight		Input signal	DVI signal format (pixels)	Input signal level (levels)	DVI frame rate		Power consumption (VA)
			Main unit (g)	Including cables (g)				Typ. (Hz)	Max. (Hz)	
X10468 series	100 to 230	50/60	3300	4200	Digital Video Interface (DVI-D)	800 × 600	256	60	120	50
X13267 series						1280 × 1024			-	
X13138 series										

▣ Electrical and optical characteristics

Parameter	Readout light wavelength (nm)	Light utilization efficiency typ. (%)	Rise time*2 (ms)	Fall time*2 (ms)
X10468-01	400 to 700	79 (633 nm)	5 (633 nm)	25 (633 nm)
X10468-02	800 ± 50	97 (785 nm)	30 (785 nm)	80 (785 nm)
X10468-03	1050 ± 50	97 (1064 nm)	20 (1064 nm)	80 (1064 nm)
X10468-04	510 ± 50	97 (532 nm)	10 (532 nm)	25 (532 nm)
X10468-05	410 ± 10	97 (405 nm)	10 (405 nm)	20 (405 nm)
X10468-06	650 ± 50	97 (633 nm)	10 (633 nm)	30 (633 nm)
X10468-07	620 to 1100	82 (1064 nm)	10 (1064 nm)	80 (1064 nm)
X10468-08	1000 to 1550	82 (1550 nm)	30 (1550 nm)	140 (1550 nm)
X10468-09	532 ± 1	96 (532 nm)	20	35
	1064 ± 5	97 (1064 nm)	25	80
X13267-01	400 to 700	76 (633 nm)	5 (633 nm)	25 (633 nm)
X13267-02	800 ± 50	97 (785 nm)	30 (785 nm)	80 (785 nm)
X13267-03	1050 ± 50	97 (1064 nm)	20 (1064 nm)	80 (1064 nm)
X13267-04	510 ± 50	97 (532 nm)	10 (532 nm)	25 (532 nm)
X13267-05	410 ± 10	97 (405 nm)	10 (405 nm)	20 (405 nm)
X13267-06	650 ± 50	97 (633 nm)	10 (633 nm)	30 (633 nm)
X13267-07	620 to 1100	80 (1064 nm)	10 (1064 nm)	80 (1064 nm)
X13267-08	1000 to 1550	80 (1550 nm)	30 (1550 nm)	140 (1550 nm)
X13267-09	532 ± 1	96 (532 nm)	15	35
	1064 ± 5	97 (1064 nm)	20	80
X13138-01	400 to 700	76 (633 nm)	5 (633 nm)	25 (633 nm)
X13138-02	800 ± 50	97 (785 nm)	30 (785 nm)	80 (785 nm)
X13138-03	1050 ± 50	97 (1064 nm)	20 (1064 nm)	80 (1064 nm)
X13138-04	510 ± 50	97 (532 nm)	10 (532 nm)	25 (532 nm)
X13138-05	410 ± 10	97 (405 nm)	10 (405 nm)	20 (405 nm)
X13138-06	650 ± 50	97 (633 nm)	10 (633 nm)	30 (633 nm)
X13138-07	620 to 1100	80 (1064 nm)	10 (1064 nm)	80 (1064 nm)
X13138-08	1000 to 1550	80 (1550 nm)	30 (1550 nm)	140 (1550 nm)
X13138-09	532 ± 1	96 (532 nm)	15	35
	1064 ± 5	97 (1064 nm)	20	80

*2: Time required to change from 10% to 90% for 2π modulation (typical value)

Operating characteristics

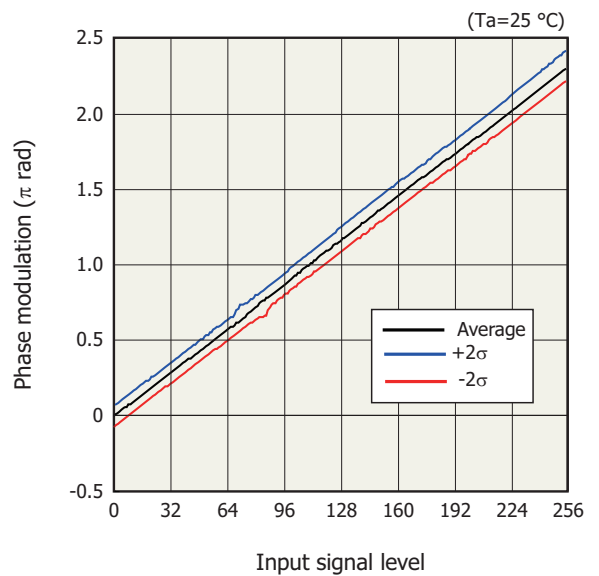
■ Light utilization efficiency

The X10468/X13267/X13138 series have high light utilization efficiency, which is defined a ratio of the 0th order diffraction light level to the input light level. The high light utilization efficiency mainly depends on reflectivity, and the amount of diffraction loss caused by the pixel structure. We adopted advanced CMOS technology to make the diffraction loss smaller. As a result, the diffraction loss is less than 5%. The -02/-03/-04/-05/-06/-09 types have a dielectric mirror which has high reflectivity. Therefore, these types have very high light utilization efficiency. The -01/-07/-08 types have relatively low light utilization efficiency compared to the ones with the dielectric mirror but have wide spectral response characteristics.

■ Phase modulation

The X10468/X13267/X13138 series can achieve phase modulation of more than 2π radians over the 400-1550 nm readout wavelength range. The X10468/X13267/X13138 series comes pre-calibrated from the factory for a specified wavelength range to have more than 2π radians of phase modulation and its linear characteristics. Figure 2 shows typical phase modulation characteristics. A phase shift of 2π radians or more and a linear phase response are achieved. The phase modulation curves for 95% pixels lies within $\pm 2\sigma$.

[Figure 2] Phase modulation (typical example)

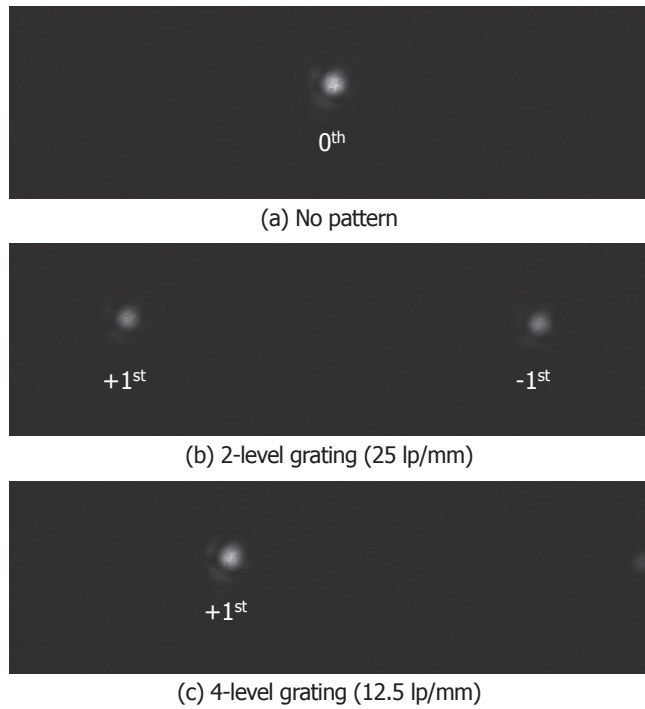


KACCB0271EA

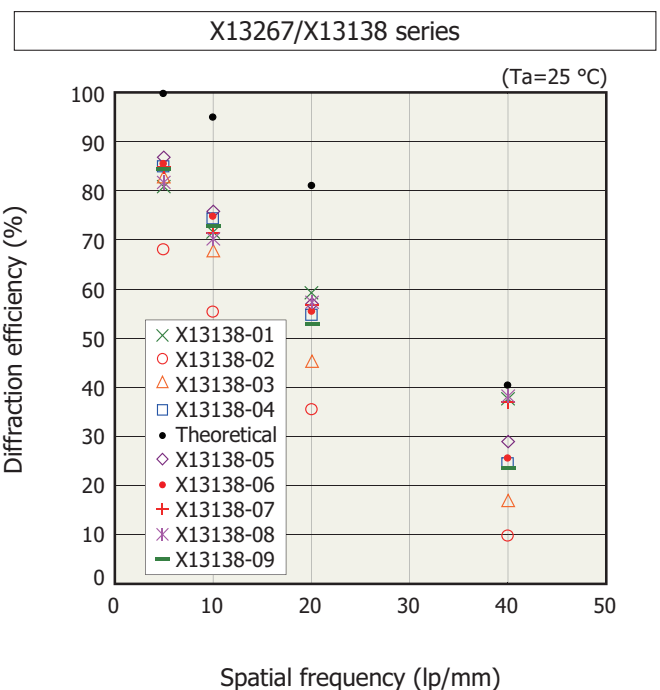
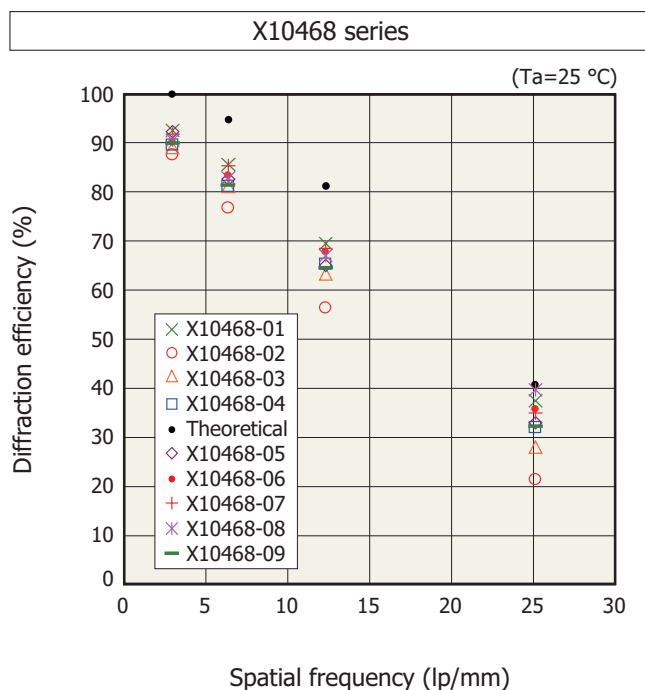
■ Diffraction efficiency

The X10468/X13267/X13138 series is a pure phase SLM with high precision phase control; therefore, it has high diffraction efficiency close to the theoretical values. Figure 3 shows images of diffracted spots, when a multi-level phase grating is formed in the X10468 series and Figure 4 shows typical diffraction efficiency characteristics. Here, the diffraction efficiency is defined I_1/I_0 , I_1 is intensity of the 1st order diffraction spot, I_0 is the intensity of the 0th order light when no pattern is displayed.

[Figure 3] Diffracted spots images (typical example)



[Figure 4] Diffraction efficiency (typical example)



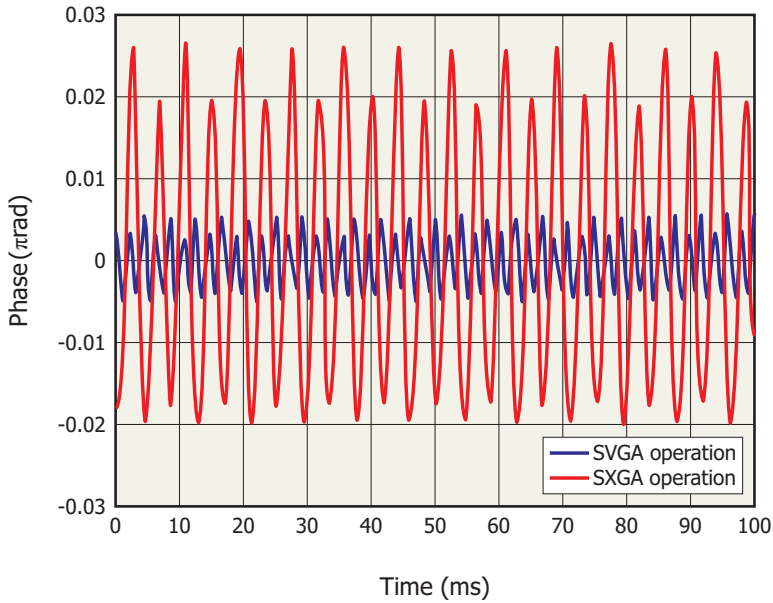
KACCB0272EA

KACCB0420EA

■ Phase fluctuation

As the LCOS-SLM is driven by AC power, the output light will fluctuate according to the drive frequency even when a uniform pattern is displayed over the entire surface. Figure 5 shows an example of the phase fluctuation for the -04 types. The drive frequency is 120 Hz for SXGA operation (X13138-04) and 240 Hz for SVGA operation (X10468/X13267-04). In SXGA operation, which operates at low frequency, the phase fluctuation is about four times greater than that in SVGA operation.

[Figure 5] Phase fluctuation (typical example)

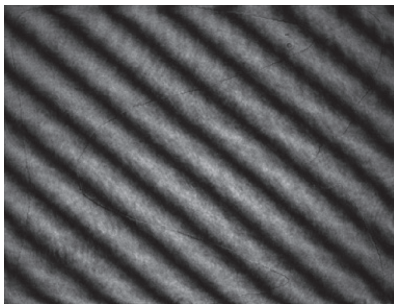


KACCB0386EA

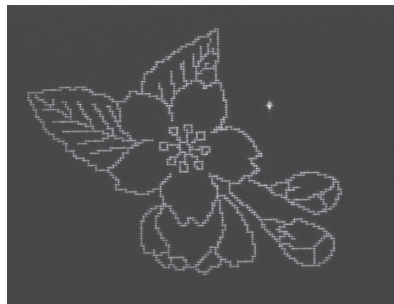
■ Output image examples

The X10468/X13267/X13138 series has high precision phase control and high diffraction efficiency, and is very suitable for holographic applications. Figure 6 (a) is a interferometer picture of the output wavefront with a flatness calibration. The image in Figure 6 (b) was reconstructed as the 1st diffraction order of the phase hologram through the Fourier transform optics. Figure 6 (c) shows a clear Laguerre Gaussian (LG) beam of (0, 1) order.

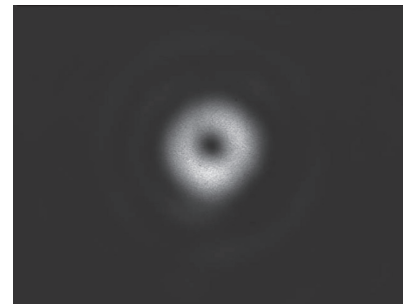
[Figure 6] Output image examples



(a) Interferogram of output wavefront with calibration
800 × 600 pixels
RMS: 0.025 λ (λ=532 nm)

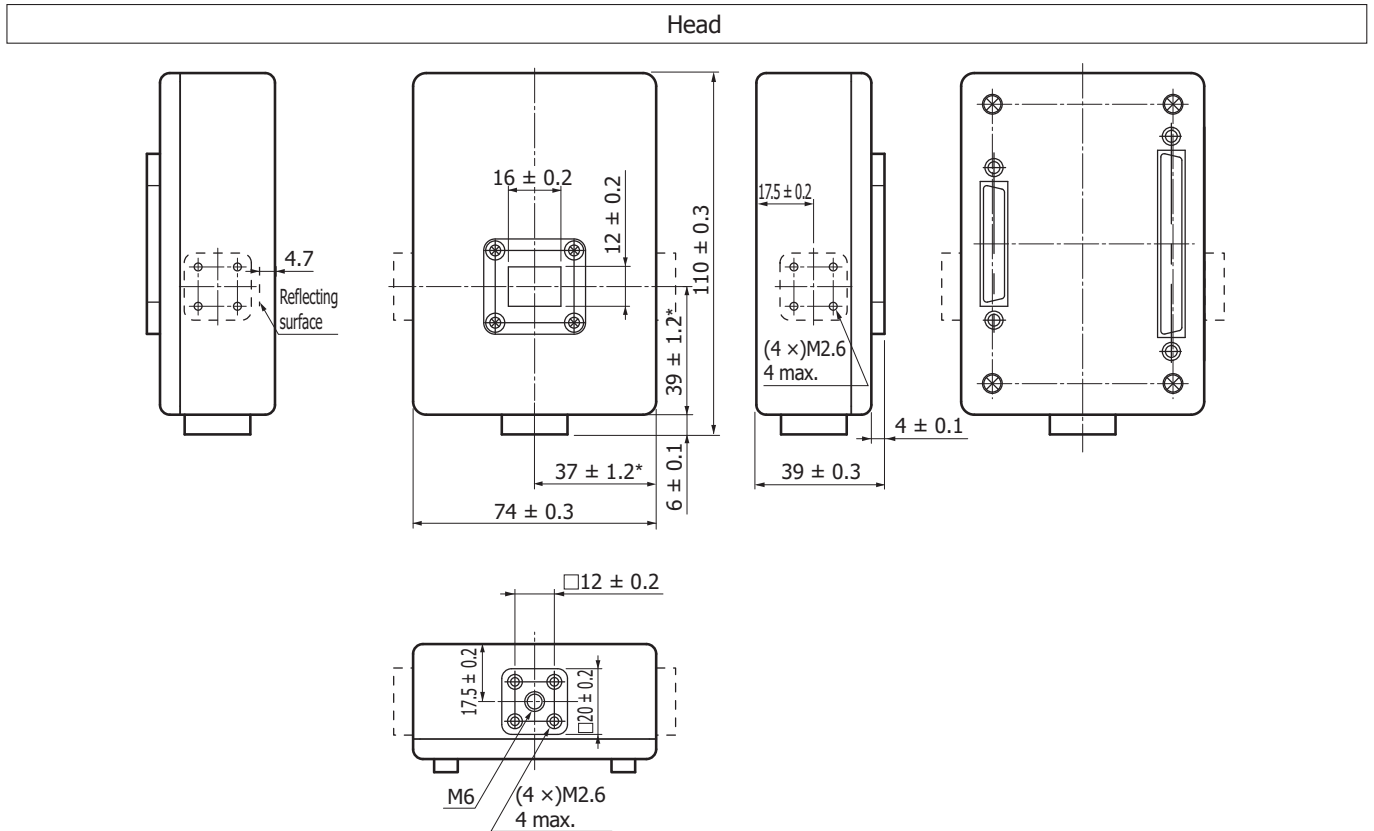


(b) Reconstructed image of CGH



(c) LG beam

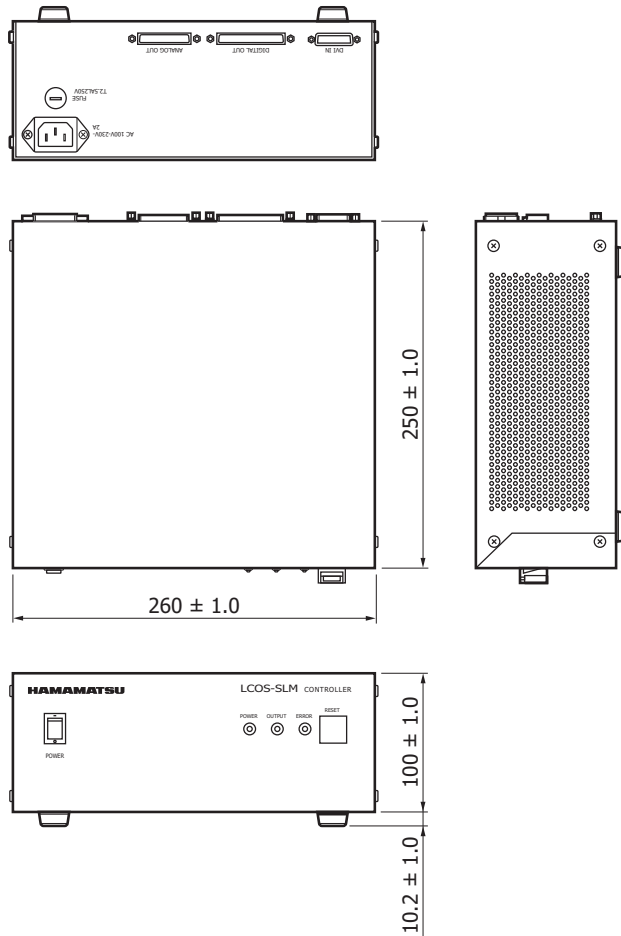
Dimensional outlines (unit: mm)



* Although the center of the LCOS effective area may deviate due to production tolerance, the aperture and the LCOS effective area are aligned.

KACCA0295ED

Controller



KACCA0296EB

The X10468/X13267/X13138 series does not include a PC. Prepare a PC by referring to the followings:

- OS that supports the provided software*3 : Microsoft® Windows® XP/7
- PC must have a DVI-D port for connecting to the X10468/X13267/X13138 series.
- The provided software supports dual monitor control. The first monitor is for PC screen and the second one is for phase images on the X10468/X13267/X13138 series. In this case, the phase image displayed on the second monitor can be controlled by operation on the first monitor. Note that you need a dual ported DVI-D display card to perform this operation.

*3: The provided software that comes with the X10468/X13267/X13138 series has generating functions such as for a computer generated hologram (CGH).

Note: Microsoft, Windows are either registered trademarks or trademarks of Microsoft Corporation in the United States and/or other countries.

Related information

www.hamamatsu.com/sp/ssd/doc_en.html

- Precautions
- Disclaimer

Information described in this material is current as of April, 2016.

Product specifications are subject to change without prior notice due to improvements or other reasons. This document has been carefully prepared and the information contained is believed to be accurate. In rare cases, however, there may be inaccuracies such as text errors. Before using these products, always contact us for the delivery specification sheet to check the latest specifications.

The product warranty is valid for one year after delivery and is limited to product repair or replacement for defects discovered and reported to us within that one year period. However, even if within the warranty period we accept absolutely no liability for any loss caused by natural disasters or improper product use. Copying or reprinting the contents described in this material in whole or in part is prohibited without our prior permission.

HAMAMATSU

www.hamamatsu.com

HAMAMATSU PHOTONICS K.K., Solid State Division

1126-1 Ichino-cho, Higashi-ku, Hamamatsu City, 435-8558 Japan, Telephone: (81) 53-434-3311, Fax: (81) 53-434-5184

U.S.A.: Hamamatsu Corporation: 360 Foothill Road, Bridgewater, N.J. 08807, U.S.A., Telephone: (1) 908-231-0960, Fax: (1) 908-231-1218

Germany: Hamamatsu Photonics Deutschland GmbH: Arzbergerstr. 10, D-82211 Herrsching am Ammersee, Germany, Telephone: (49) 8152-375-0, Fax: (49) 8152-265-8

France: Hamamatsu Photonics France S.A.R.L.: 19, Rue du Saule Trapu, Parc du Moulin de Massy, 91882 Massy Cedex, France, Telephone: 33-(1) 69 53 71 00, Fax: 33-(1) 69 53 71 10

United Kingdom: Hamamatsu Photonics UK Limited: 2 Howard Court, 10 Tewin Road, Welwyn Garden City, Hertfordshire AL7 1BW, United Kingdom, Telephone: (44) 1707-294888, Fax: (44) 1707-325777

North Europe: Hamamatsu Photonics Norden AB: Torshamnsgatan 35 16440 Kista, Sweden, Telephone: (46) 8-509-031-00, Fax: (46) 8-509-031-01

Italy: Hamamatsu Photonics Italia S.r.l.: Strada della Moia, 1 int. 6, 20020 Arese (Milano), Italy, Telephone: (39) 02-93581733, Fax: (39) 02-93581741

China: Hamamatsu Photonics (China) Co., Ltd.: B1201, Jiaming Center, No.27 Dongsanhuan Beilu, Chaoyang District, Beijing 100020, China, Telephone: (86) 10-6586-6006, Fax: (86) 10-6586-2866